



Doc. no: SW-TEST-MCO-GS-VALI2D  
Rev: 1  
Date: 2013-03-15

## Swarm Level 2 Processing Facility

### SW\_TEST\_MCO\_SHAi2D

# Intermediate validation of Swarm Level 2 Product: MCO\_SHAi2D

**British Geological Survey (BGS)**  
**National Space Institute – DTU Space (DTU)**  
**Delft Institute of Earth Observation and Space Systems (DEOS)**  
**Helmholtz Centre Potsdam - German Research Centre for Geosciences (GFZ)**  
**Eidgenössische Technische Hochschule Zürich (ETH)**  
**Institut de Physique du Globe de Paris (IPGP)**

**with additional contributions from**

**NASA Goddard Space Flight Center (GSFC)**  
**University of Colorado (CIRES)**  
**Charles University Prague (CUP)**

Prepared:

Prepared:

Martin Rother

Date 2013-03-15

Reyko Schachtschneider

Date 2013-03-15

Workpackage manager, SIL

Document manager, SIL

© GFZ, Germany, 2013. Proprietary and intellectual rights of GFZ, Germany are involved in the subject-matter of this material and all manufacturing, reproduction, use, disclosure, and sales rights pertaining to such subject-matter are expressly reserved. This material is submitted for a specific purpose as agreed in writing, and the recipient by accepting this material agrees that this material will not be used, copied, or reproduced in whole or in part nor its contents (or any part thereof) revealed in any manner or to any third party, except own staff, to meet the purpose for which it was submitted and subject to the terms of the written agreement.

# Swarm Level 2 Processing Facility

Intermediate validation of Swarm Level 2 Product:

Doc. no: SW-TEST-MCO-GS-VALI2D, Rev: 1

Page 2 of 18

---

## Record of Changes

ECR/ECO	Description	Rev	Date
Initial vers.	Released	1	2013-03-15

# Swarm Level 2 Processing Facility

Intermediate validation of Swarm Level 2 Product:

## Table of Contents

- 1 Introduction.....5**
  - 1.1 Purpose .....5
  - 1.2 Scope .....5
  - 1.3 Executive Summary .....5
- 2 Applicable and Reference Documentation .....5**
  - 2.1 Applicable Documents .....5
  - 2.2 Reference Documents.....5
  - 2.3 Abbreviations .....6
- 3 Intermediate Validation of Swarm Level 2 products .....6**
  - 3.1 Objective .....6
  - 3.2 Validation Process for the Core Field Products .....6
  - 3.3 Role of Scientist in the Loop .....7
- 4 Intermediate Validation Report of MCO\_SHAI2D .....8**
  - 4.1 Input products and data .....8
  - 4.2 Output Products .....9
  - 4.3 Validation Results .....9
    - 4.3.1 Mean square vector field difference per spherical harmonic degree .....9
    - 4.3.2 Correlation per spherical harmonic degree.....13
    - 4.3.3 Visualisation of coefficient differences .....14
    - 4.3.4 Comparison of computed field values to ground-based observatory data.....15
    - 4.3.5 Plotting time series .....15
  - 4.4 Criteria.....17
- 5 Comments from Scientist in Loop .....17**
- 6 Conclusions.....18**

# Swarm Level 2 Processing Facility

Intermediate validation of Swarm Level 2 Product:

Doc. no: SW-TEST-MCO-GS-VALI2D, Rev: 1

Page 4 of 18

---

## List of Figures

- Figure 4-1: Temporal evolution of the model misfit compared to the reference model per SH degree for the SV. The lines represent the sum of all orders in that degree in nT/yr. 10
- Figure 4-2: Histograms of data residua; for low latitudes (51 and 52) and for high latitudes (61, 62, and 63). 11
- Figure 4-4: Power spectra for five different snapshots of the inverted slow core lane model. The field is given in nT, the SV is given in nT/yr, and the acceleration in nT/yr<sup>2</sup>. 13
- Figure 4-5: Visualisation of field differences between inverted model and reference field in a triangular order over degree scheme in nT. 14
- Figure 4-6: Visualisation of secular variation differences between inverted model and reference field in a triangular order over degree scheme in nT/yr. 15
- Figure 4-8: Time series of secular variation Gauss coefficients, the thin line is the behaviour of the reference model over the full time span, the thick solid line is the data period covered used for model estimation, the vertical dashed lines are indicating the data period covered. 17

## List of Tables

- Table 4-1: Input products used for validation 8

# Swarm Level 2 Processing Facility

Intermediate validation of Swarm Level 2 Product:

Doc. no: SW-TEST-MCO-GS-VALI2D, Rev: 1

Page 5 of 18

---

## 1 Introduction

### 1.1 Purpose

The purpose of this document is to describe and illustrate the processes and tests applied to the intermediate validation of the MCO\_SHAi2D product. The detailed product name under inspection is: SW\_TEST\_MCO\_SHAi2D. The failure case that is tested here (see [RD-5]) is 2d: Random magnetic bias.

This product uses data acquired from MJD -546.81 to MJD 1095.50 and is valid over the period MJD -546.81 to MJD 1095.50, i.e. approx. 1998.5 to 2003.0. This is version 01 of the product.

### 1.2 Scope

The document applies to the development phase and to the implementation and operational phases of the project.

### 1.3 Executive Summary

The Swarm product MCO\_SHAi2D has undergone a series of validation and checks by partner GFZ.

**The corresponding MCO\_SHAi2D is a result in the 'failure/error-cases'-framework. The SIL's opinion is that the MCO\_SHAi2D is validated and is therefore suitable for release as the intermediate MCO\_SHAi2D -- inside this failure case framework.**

## 2 Applicable and Reference Documentation

### 2.1 Applicable Documents

The following documents are applicable for this document:

[AD-1] SW-RS-ESA-GS-0178: Development of the Swarm Level 2 Algorithms and Associated Level 2 Processing Facility – Technical Requirements, 2009-07-17

### 2.2 Reference Documents

The following documents contain supporting and background information to be taken into account during the activities specified within this document.

[RD-1] Swarm Level 1b Product Definition, SW-RS-DSC-SY-0007

[RD-2] Product Specification for L2 Products and Auxiliary Products, SW-DS-DTU-GS-0001

[RD-3] Earth Explorer File Format Standards Doc. No: PE-TN-ESA-GS-0001 ESA ESTEC, Noordwijk, The Netherlands

[RD-4] Swarm Level 2 Product Data Handbook, SW-HB-DTU-GS-0001

[RD-5] Proposal for the definition of failure cases and for the development of improvements to L2PS algorithms, SW-CN-DTU-GS-0002, revision1dA, 2012-10-25.

# Swarm Level 2 Processing Facility

Intermediate validation of Swarm Level 2 Product:

Doc. no: SW-TEST-MCO-GS-VALI2D, Rev: 1

Page 6 of 18

---

## 2.3 Abbreviations

<i>Acronym</i>	<i>Description</i>
CAT-1	Category 1 products
EUL	Euler Angle
L2PS	Level 2 Processing Segment
SHA	Spherical Harmonic Analysis
SIL	Scientist in the Loop
PDGS	Payload Data Ground Segment
VAL	Validation

## 3 Intermediate Validation of Swarm Level 2 products

### 3.1 Objective

The objective of this document is to verify and validate the Level 2 CAT-1 intermediate product output for the failure cases tests. The next stage of verification is carried out using auxiliary data from independent sources to confirm that the outputs are scientifically valid and feasible. The purpose is (a) to ensure that no obvious mistakes or errors have been made in the production of the Level 2 outputs and (b) to give non-expert users confidence that the products released have been thoroughly inspected.

Many products are computed using different algorithms and data selection methods from the Swarm Level 1b data.

### 3.2 Validation Process for the Core Field Products

The magnetic core field product is describing a spherical harmonic model of the main (core) field and its temporal variation up to degree 20.

Two intermediate Core field products are derived through separate processing chains:

- MCO\_SHAi2C is derived from the from Comprehensive Inversion product chain
- MCO\_SHAi2D is derived from the Dedicated Core Field chain.

The following steps are undertaken to validate the SLOW lane core field model of the Dedicated Core Field chain:

# Swarm Level 2 Processing Facility

Intermediate validation of Swarm Level 2 Product:

Doc. no: SW-TEST-MCO-GS-VALI2D, Rev: 1

Page 7 of 18

---

- An intermediary L2 product is produced by an Level 2 Processing Segment (L2PS) processing chain (for MCO\_SHAi2D)
- An internal validation of the product by the chain is produced in the form of an intermediary product validation report (for MCO\_SHAi2D, the intermediary validation report is MCO\_VALi2D)
- The intermediary product including its internal validation is distributed via PDGS to the L2PS
- The British Geological Survey will perform an independent validation of the product and produces a report, which will include the internal validation.

## 3.3 Role of Scientist in the Loop

The validation of the product is actively undertaken by a scientist in the loop (SIL)

- The SIL checks the product conforms to scientific expectations using a series of tests and also checks the product is correctly formatted for release.
- The SIL produces an intermediate validation report and releases the product back to the ESA PDGS for further independent validation.

The role of the SIL is to ensure that the output meets the criteria of being a valid scientific product and fulfilling the quality requirements.

# Swarm Level 2 Processing Facility

Intermediate validation of Swarm Level 2 Product:

Doc. no: SW-TEST-MCO-GS-VALI2D, Rev: 1

Page 8 of 18

## 4 Intermediate Validation Report of MCO\_SHAi2D

The Core field models of the Earth's magnetic field describe the large scale spatial and temporal features of the magnetic field generated in the core. The models are used in a large number of research and commercial applications. The products consist of a series of so-called Gauss coefficients of degree  $n = 1$  to  $N$ , which can be used to derive any component of the magnetic field using spherical harmonic. The value of  $N$  shall be at least 14, progressing to 20 during the mission.

There are a number of internationally agreed core field models available for comparison including (a) the International Geomagnetic Reference Field (IGRF) model and (b) the World Magnetic Model (WMM). These models are auxiliary data AUX\_IGR\_2\_ and AUX\_COR\_2\_, though note there are other available core field models.

The IGRF and WMM models describe the large-scale magnetic field up to degree 13 for the time epoch 2010.0 with a prediction of secular variation up to degree 8, valid for five years (until 2015). The Gauss coefficients for both IGRF and WMM are freely available for use.

The following validation tests can be made using the Gauss coefficients from MCO\_SHA\_2D and MCO\_SHA\_2C (a) with each other (when available).

### 4.1 Input products and data

The following products were used in the assessment of the MCO\_SHAi2D

Table 4-1: Input products used for validation

Product	Type	Valid from/to	Comment
SW_TEST_AUX_COR_2_19980101T000000_20030101T000000_0001.DBL	Core field model, Reference!	Jan 1998 – Jan 2003	Independent model; derived from satellite and ground observatory data
SW_TEST_MCO_SHA_2_19980101T000000_20030101T000000_0004.DBL	Core field model, Reference!	Jan 1998 – Jan 2003	Updated version of reference, used to verify internally merged reference snapshot table
SW_TEST_AUX_LIT_2_00000000T000000_99999999T999999_0001.DBL	Lithospheric model	N/A	
SW_TEST_MCO_SHAi2D_19980101T000000_20030101T000000_0224.DBL	Dedicated Core Field Inversion model	Jul 1998 – Dec 2002	Derived from Swarm Level 1 data



# Swarm Level 2 Processing Facility

Intermediate validation of Swarm Level 2 Product:

Doc. no: SW-TEST-MCO-GS-VALI2D, Rev: 1

Page 9 of 18

## 4.2 Output Products

The output products from this validation report are:

*Swarm Level 2 Magnetic field Product:*

SW\_TEST\_MCO\_SHAi2D\_19980701T120000\_20021231T120000\_0224.DBL

*Swarm Level 2 Intermediate Validation Product:*

SW\_TEST\_MCO\_VALi2D\_19980701T120000\_20021231T120000\_0224.DBL

## 4.3 Validation Results

The tests were conducted using data between 1998.5 and 2003.0.

The following tests have been applied to the data.

### 4.3.1 Mean square vector field difference per spherical harmonic degree

The mean square vector field difference between models per spherical harmonic degree ( $n$ ) is diagnostic of how closely the models match on average across the globe. The difference between Gauss coefficients  $g_n^m$  of model  $i$  and model  $j$  can be defined as:

$${}_{i,j}R_n = (n+1) \left( \frac{a}{r} \right)^{(2n+4)} \sum_{m=0}^n [{}_i g_n^m - {}_j g_n^m]^2 \quad \text{Equation 4-1}$$

where  $n$  is the degree,  $m$  is the order,  $a$  is the magnetic reference spherical radius of 6371.2 km which is close to the mean Earth radius, and  $r$  is the radius of the sphere of interest, which is taken as  $r = a$  for comparisons at the Earth's surface and  $r = 3480$  km for comparisons at the core-mantle boundary. See Figure 4-5 for plot of  $R$  from equation 4-1.

The error measure we calculated for checking the quality requirements is the RMS difference between the secular variations of two models averaged over the spherical surface and in time (cf. [AD-1]):

$$E = \sqrt{\frac{1}{\Delta T} \sum_{l=2}^{16} (l+1) \sum_m \int (\dot{g}_l^m - \tilde{g}_l^m)^2 dt}$$

Equation 4-2

In Figure 4-1 we plot the temporal evolution of the SV per degree in the period where the model is valid.

# Swarm Level 2 Processing Facility

Intermediate validation of Swarm Level 2 Product:

Doc. no: SW-TEST-MCO-GS-VALI2D, Rev: 1

Page 10 of 18

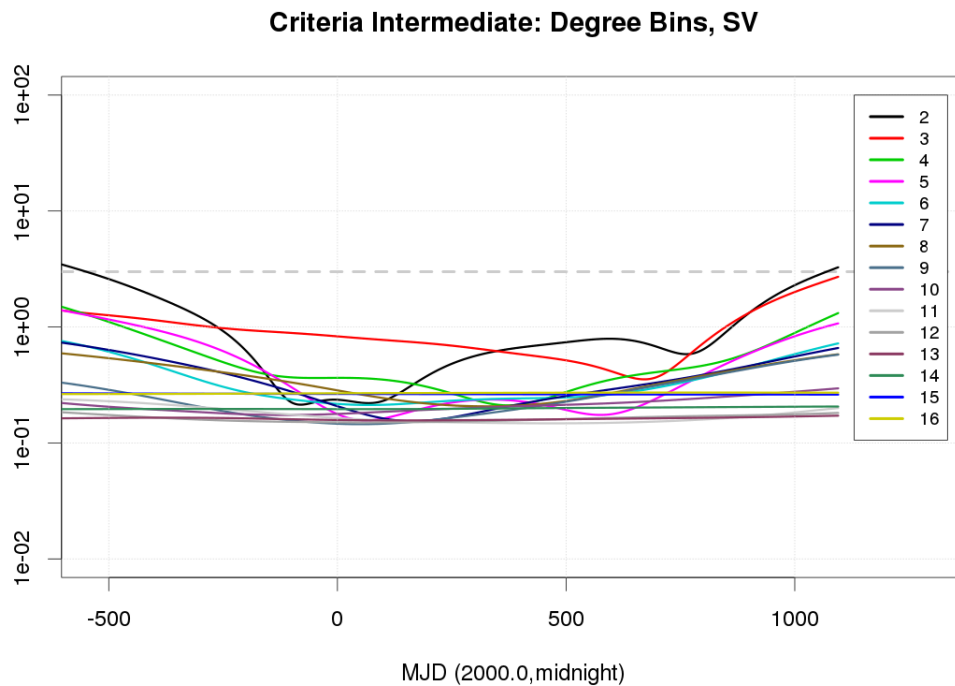


Figure 4-1: Temporal evolution of the model misfit compared to the reference model per SH degree for the SV. The lines represent the sum of all orders in that degree in nT/yr.

In Figure 4-2 we show the histograms of the data residua for the horizontal components of low latitude data and all components of high latitude data. In Figure 4-3 we plot the differences of power spectra for the inverted model and the reference model, as well as a correlation coefficient between both models. The latter is close to 1 till degree 13 and falls off afterwards. In Figure 4-4 we show the power spectra for five snapshots in the model period for the core field and the secular variation. All these plots look reasonable and pass the visual inspection. For the quality criteria that need to be fulfilled see section 4.4.

# Swarm Level 2 Processing Facility

Intermediate validation of Swarm Level 2 Product:

Doc. no: SW-TEST-MCO-GS-VALI2D, Rev: 1

Page 11 of 18

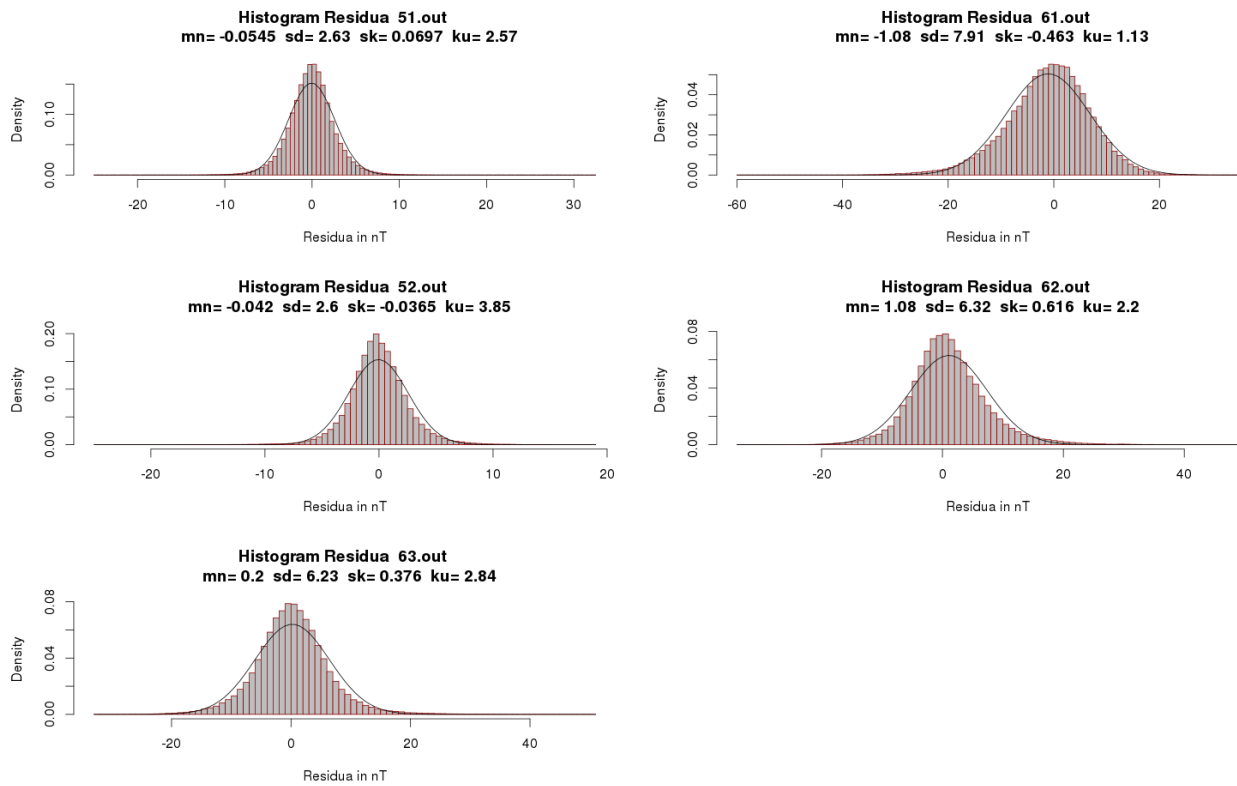


Figure 4-2: Histograms of data residua; for low latitudes (51 and 52) and for high latitudes (61, 62, and 63).

# Swarm Level 2 Processing Facility

Intermediate validation of Swarm Level 2 Product:

Doc. no: SW-TEST-MCO-GS-VALI2D, Rev: 1

Page 12 of 18

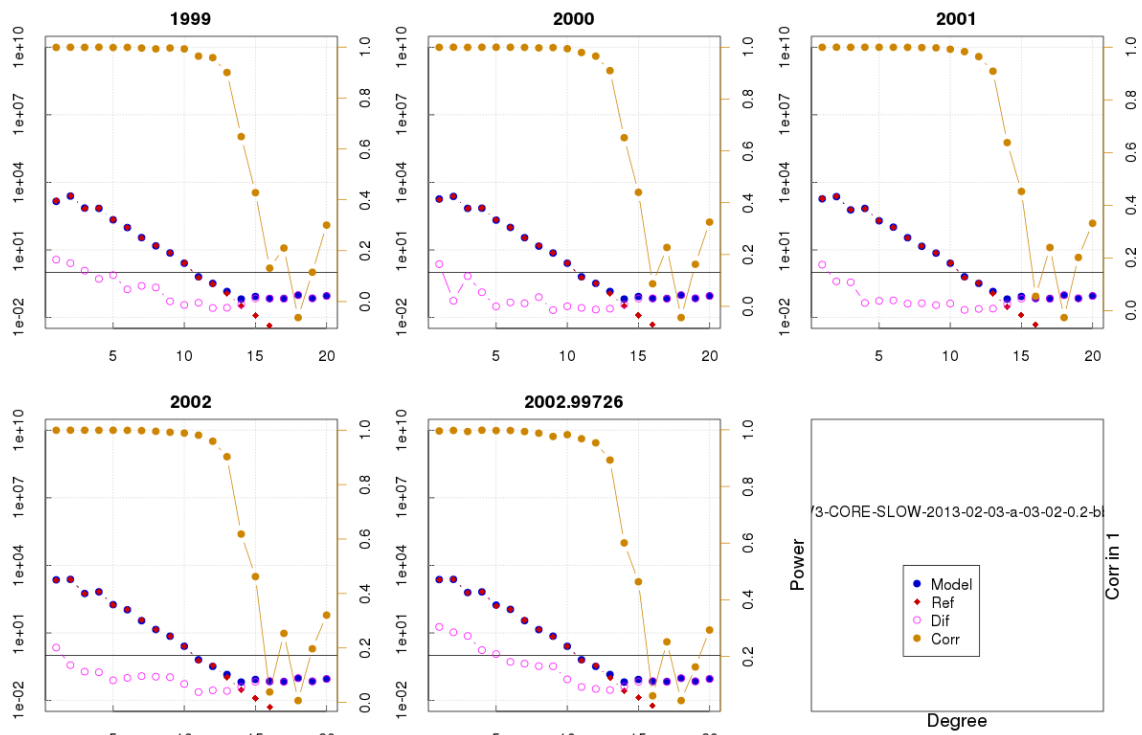


Figure 4-3: Power of difference (open circles) and correlation of evaluated model and reference model per spherical harmonic degree.

# Swarm Level 2 Processing Facility

Intermediate validation of Swarm Level 2 Product:

Doc. no: SW-TEST-MCO-GS-VALI2D, Rev: 1

Page 13 of 18

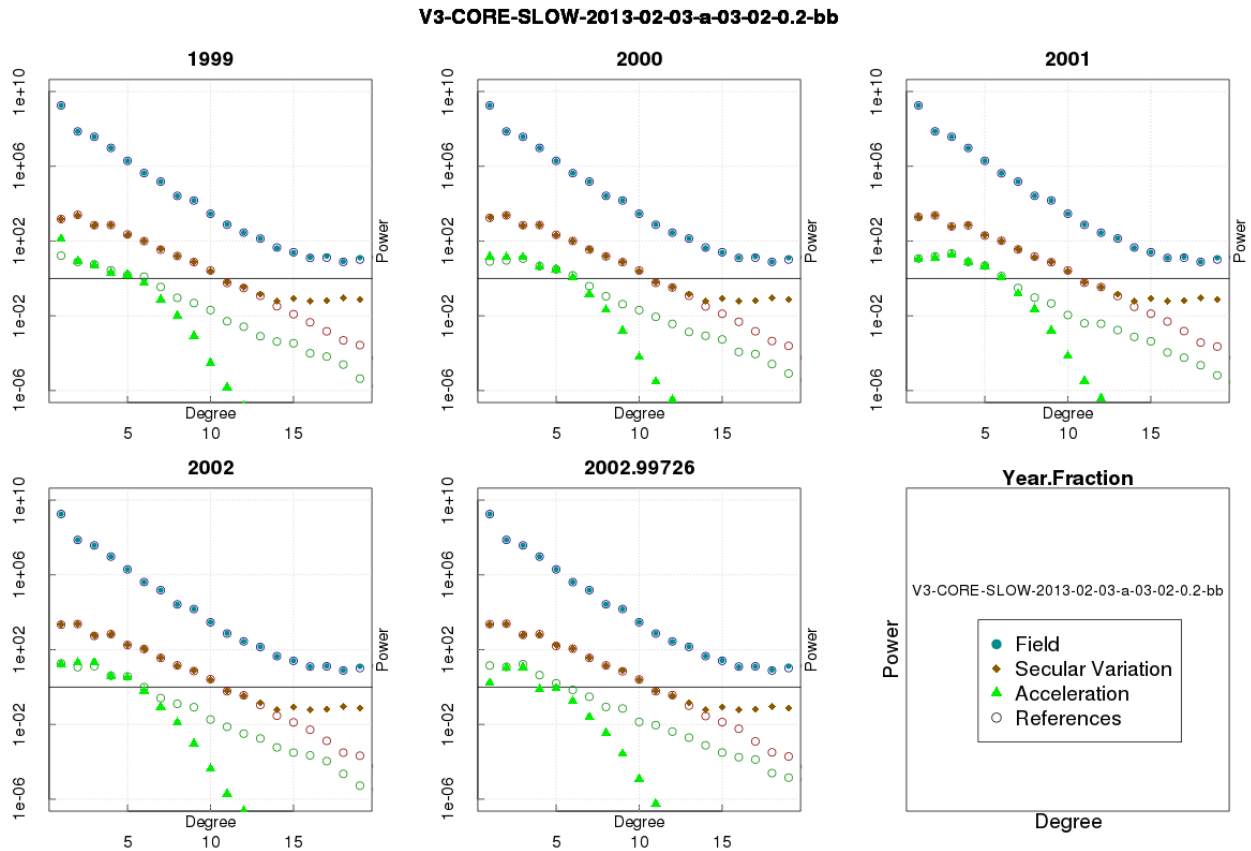


Figure 4-4: Power spectra for five different snapshots of the inverted slow core lane model. The field is given in nT, the SV is given in nT/yr, and the acceleration in nT/yr<sup>2</sup>.

## 4.3.2 Correlation per spherical harmonic degree

Analysis of spherical harmonic spectra is a powerful way to diagnose differences in amplitude between models but tells us little about how well they are correlated. The correlation per degree between two models again labelled by the indices  $i$  and  $j$  can be studied as a function of spherical harmonic degree using the quantity:  ${}_{i,j}\rho_n$

$${}_{i,j}\rho_n = \frac{\sum_{m=0}^n ({}_i g_n^m {}_j g_n^m)}{\sqrt{\left( \sum_{m=0}^n ({}_i g_n^m)^2 \right) \left( \sum_{m=0}^n ({}_j g_n^m)^2 \right)}} \quad \text{Equation 4-3}$$

Ideally, the correlation should be close to 1 for all models, indicating that they have equivalent features and coefficients. If the correlation falls below 0.5, for degrees 1-9, then the models should be examined in more detail. Coefficients from degree 10-13 in IGRF and WMM are less well-determined (e.g. due to noise) and also change more rapidly so are not expected to be well correlated by the launch of the Swarm mission.

See Figure 4-3 for correlation per spherical harmonic degree.

# Swarm Level 2 Processing Facility

Intermediate validation of Swarm Level 2 Product:

Doc. no: SW-TEST-MCO-GS-VALI2D, Rev: 1

Page 14 of 18

## 4.3.3 Visualisation of coefficient differences

A final method of visualising the differences in Gauss coefficients is to plot the differences  ${}_i g_n^m - {}_j g_n^m$  as a triangular plot, with the zonal coefficients lying along the centre of the triangle, the sectorial coefficients along the edges and the tesseral coefficients filling the central regions. These plots will illustrate which, if any, coefficients are strongly divergent between models.

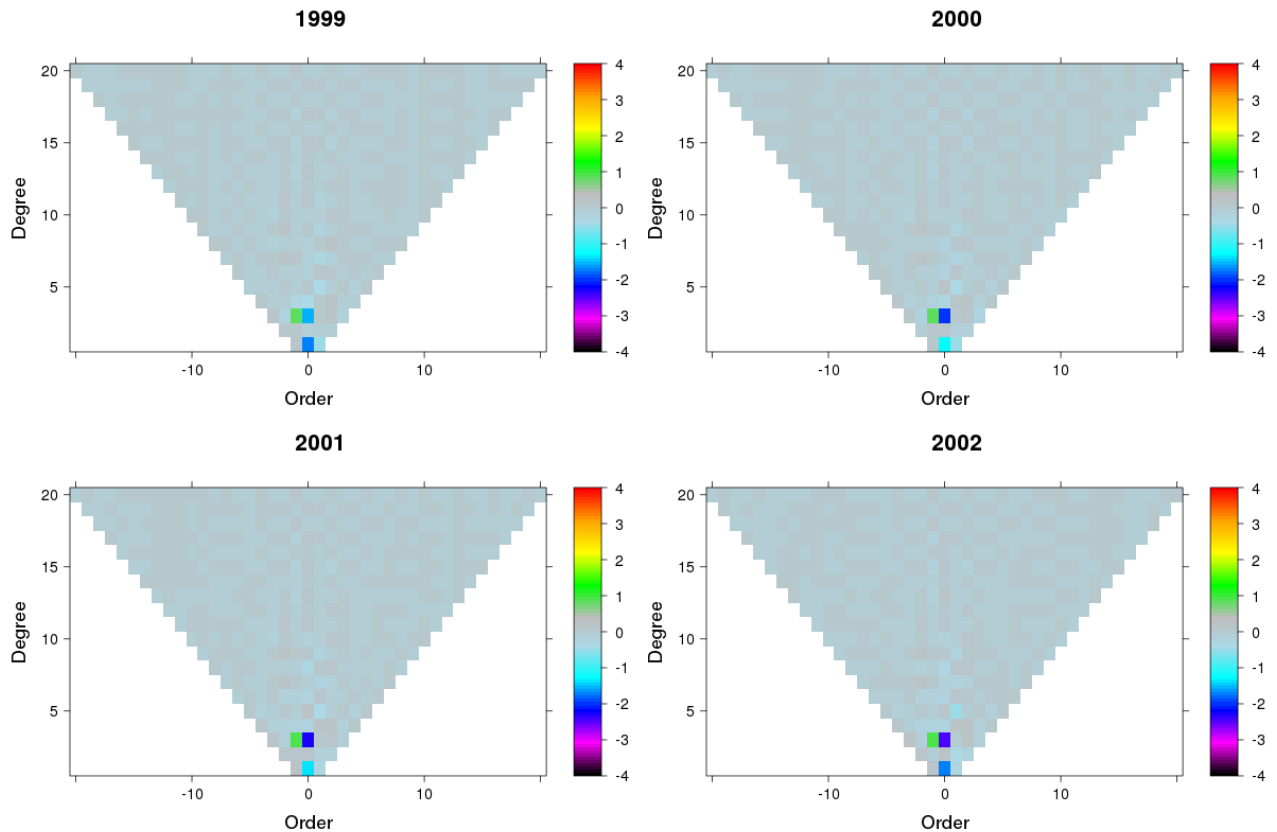


Figure 4-5: Visualisation of field differences between inverted model and reference field in a triangular order over degree scheme in nT.

# Swarm Level 2 Processing Facility

Intermediate validation of Swarm Level 2 Product:

Doc. no: SW-TEST-MCO-GS-VALI2D, Rev: 1

Page 15 of 18

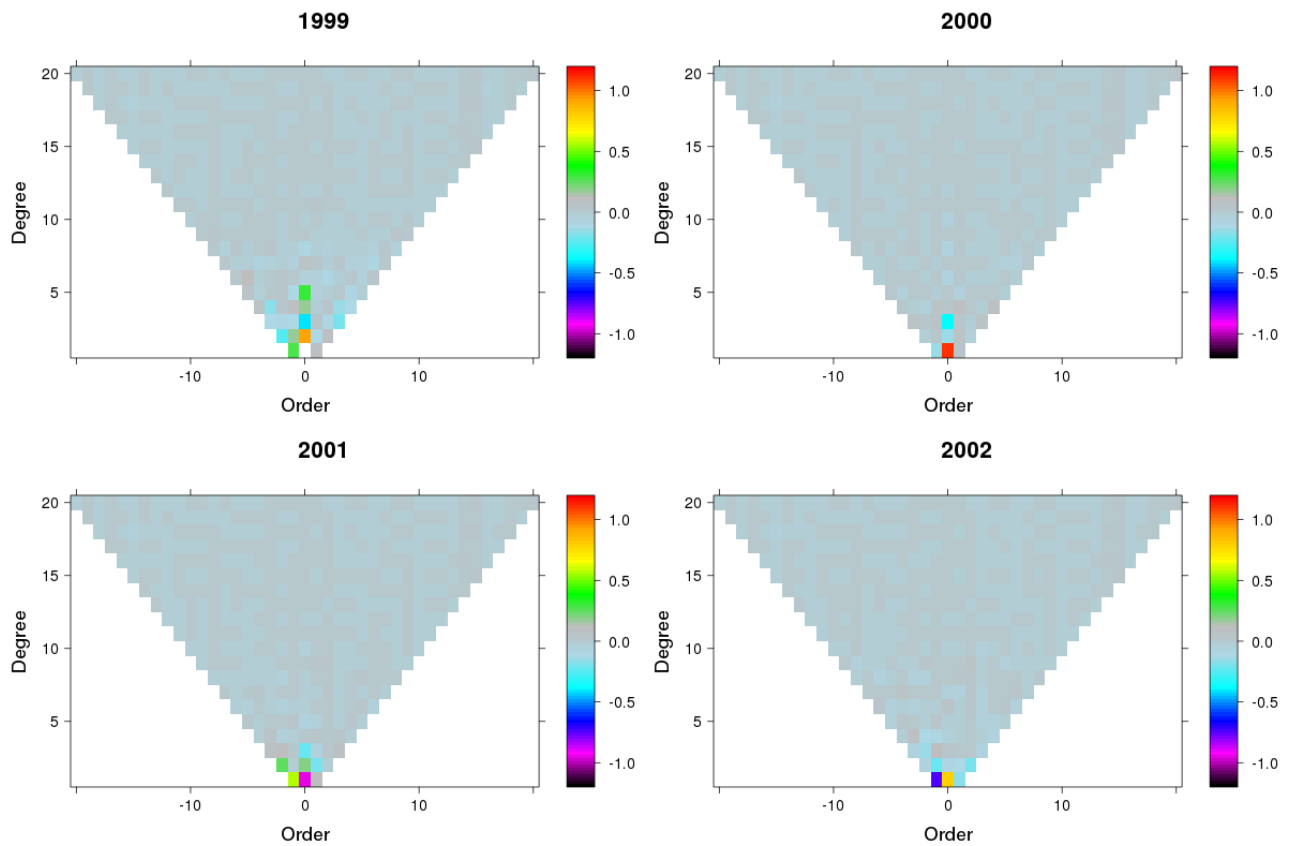


Figure 4-6: Visualisation of secular variation differences between inverted model and reference field in a triangular order over degree scheme in nT/yr.

#### 4.3.4 Comparison of computed field values to ground-based observatory data

Ground-based observatory data (AUX\_OBS\_2\_) can be used to check the values computed from the core field models.

For V2 tests no comparisons of the DCO SLOW CORE model estimate with observatory data is performed

#### 4.3.5 Plotting time series

A series of plots of time versus computed Gauss coefficients will be derived to search for anomalous or periodic behaviour which might indicate underlying issues.

# Swarm Level 2 Processing Facility

Intermediate validation of Swarm Level 2 Product:

Doc. no: SW-TEST-MCO-GS-VALI2D, Rev: 1

Page 16 of 18

V3-CORE-SLOW-2013-02-03-a-03-02-0.2-bb

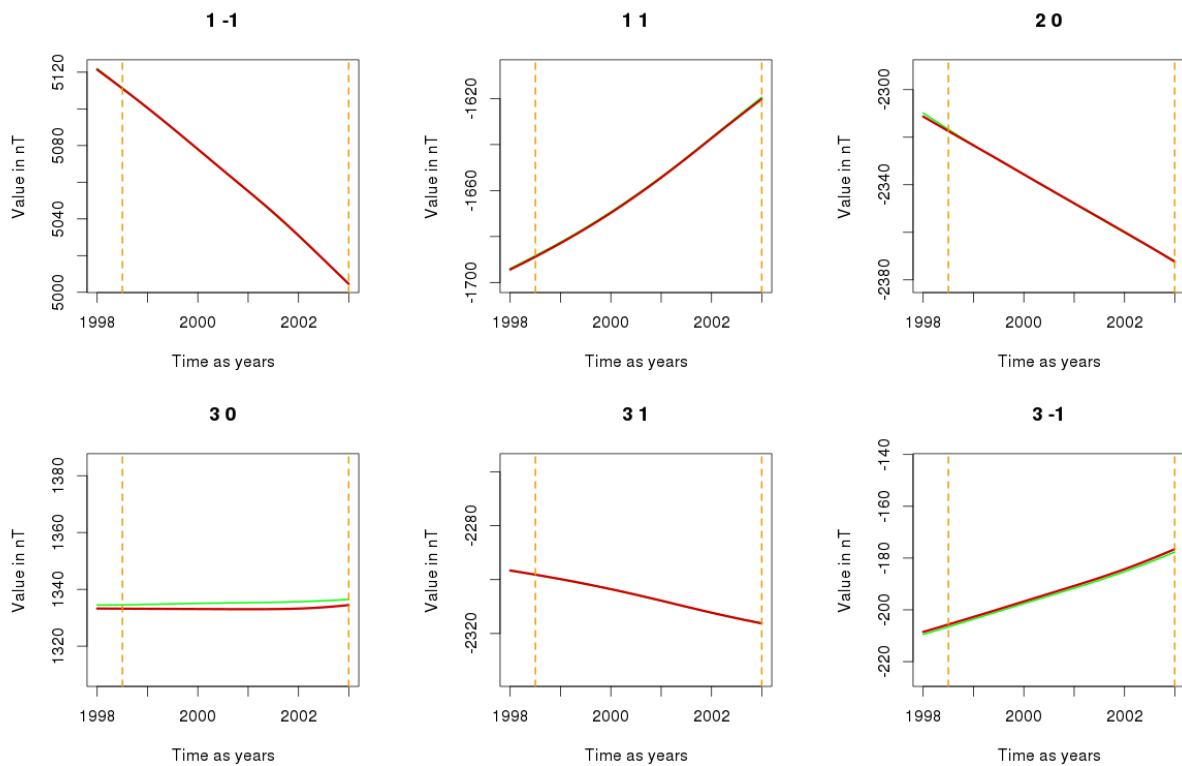


Figure 4-7: Time series of Gauss coefficients, the thin line is the behaviour of the reference model over the full time span, the thick solid line is the data period covered used for model estimation, the vertical dashed lines are indicating the data period covered.



# Swarm Level 2 Processing Facility

Intermediate validation of Swarm Level 2 Product:

Doc. no: SW-TEST-MCO-GS-VALI2D, Rev: 1

Page 17 of 18

V3-CORE-SLOW-2013-02-03-a-03-02-0.2-bb

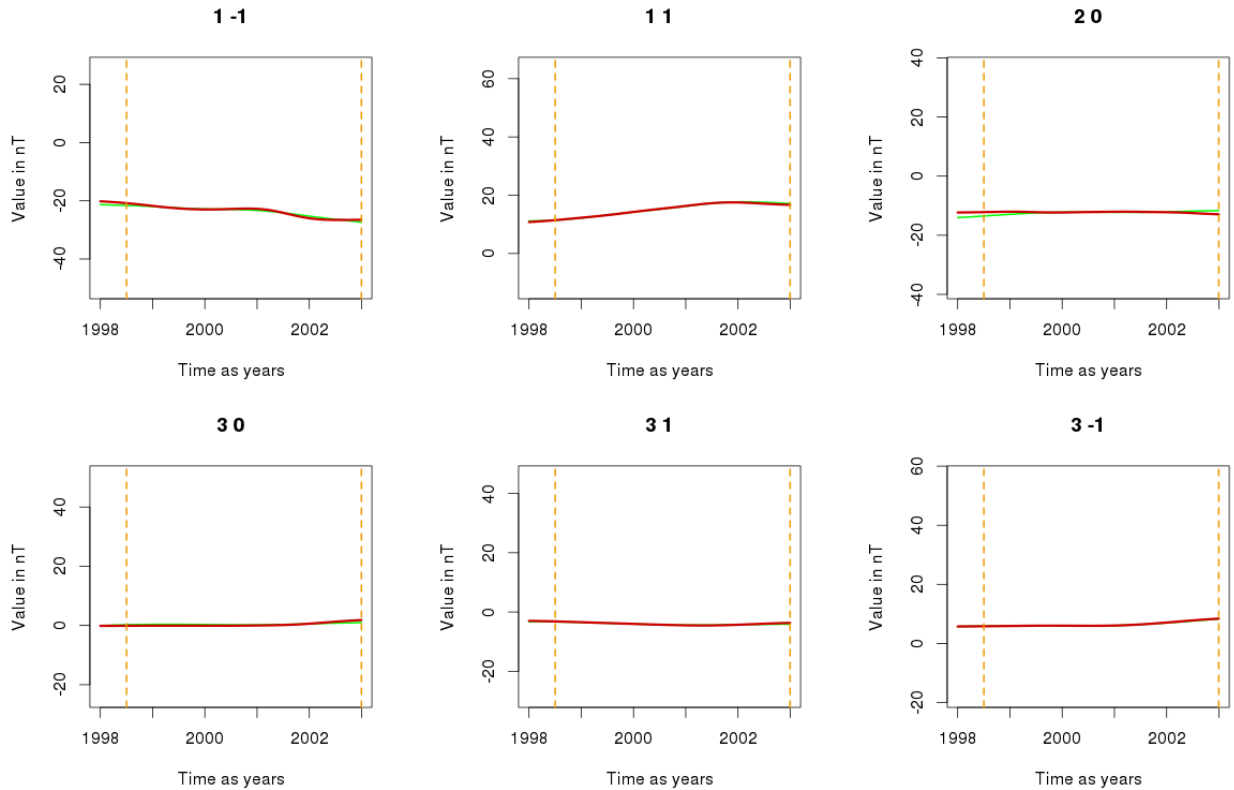


Figure 4-8: Time series of secular variation Gauss coefficients, the thin line is the behaviour of the reference model over the full time span, the thick solid line is the data period covered used for model estimation, the vertical dashed lines are indicating the data period covered.

## 4.4 Criteria

The following criteria are used to check the validity of the products:

The value of the error measure from Equation 4-2 must be smaller than 3 nT/yr. In our inversion during the V2 test we reached a value of **2.48 nT/yr**.

## 5 Comments from Scientist in Loop

The following comments and observations are given by the SIL:

1. The reference model is the merged model of the core field and lithospheric field model, as this is the true result in the production phase.
2. For this result the fundamentally same sequence of steps have been executed. Beside the required modifications in input data set no case specific tailoring was applied. Compared to the V2 Test, intermediate evaluations have not lead to significant different decisions by SIL about parameterization. Further iterations and fine-tuning of the damping parameters, are expected to improve the model, but the effort should stay comparable to the results of the V2 test.

# Swarm Level 2 Processing Facility

Intermediate validation of Swarm Level 2 Product:

Doc. no: SW-TEST-MCO-GS-VALI2D, Rev: 1

Page 18 of 18

---

## 6 Conclusions

The model we obtained in the inversion process fulfils the quality requirements (cf. section 4.4).